

# STUDY GUIDE

## TWO ROADS TO WAR

### LESSON 1

GERMANY	JAPAN
<ul style="list-style-type: none"> <li>• Begins a military draft that expands its army to 550,000 troops</li> <li>• Sends troops to the Rhineland</li> <li>• Becomes allied with Mussolini</li> <li>• Annexes Austria to Germany</li> <li>• Makes an agreement with Stalin called the Nazi-Soviet Nonaggression Pact</li> <li>• Invades western Poland</li> <li>• War declared on by Britain and France</li> </ul>	<ul style="list-style-type: none"> <li>• Invades Manchuria</li> <li>• Withdraws from the League of Nations after the League condemns its actions against Manchuria</li> <li>• Continues its expansion, with the military now controlling Japanese politics</li> <li>• Declares war on China</li> <li>• Attacks the United States and European colonies in Southeast Asia</li> </ul>

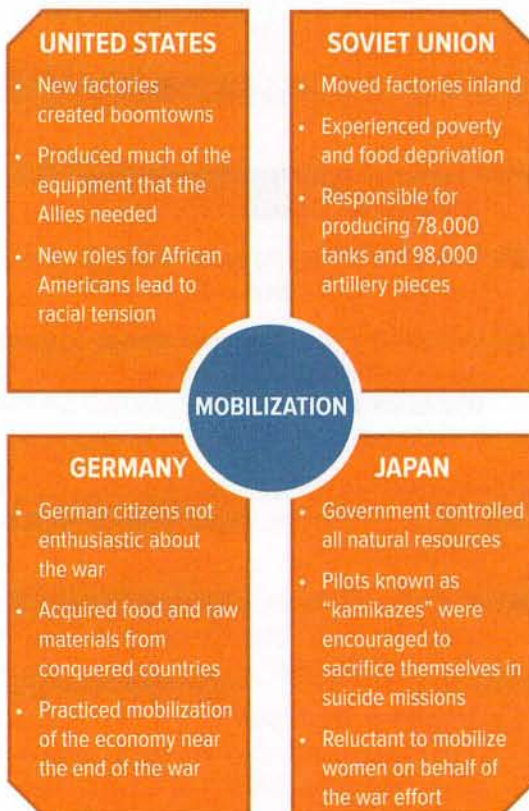
## EARLY EVENTS OF WORLD WAR II

### LESSON 2



## THE HOME FRONT

### LESSON 3



## THE HOLOCAUST

### LESSON 4



## THE END OF WORLD WAR II

### LESSON 5

